

Please carefully read the instructions before you start.

ANTIGEN TEST with RHINOSWAB JUNIOR INSTRUCTIONS

KIT INCLUDES



Biohazard Bag



Tube



Swab



Analyzer



Processing Fluid



Alcohol Wipes



FOR DEMONSTRATION PURPOSES ONLY
NOT FOR CLINICAL USE

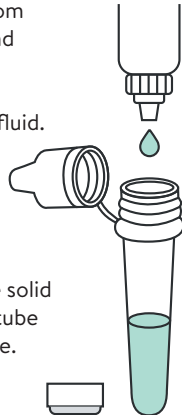
STEP 1: ADULT PREPARES THE KIT

1.1 Wash or sanitize your hands and **PLACE ALL THE CONTENTS** of the kit on a clean dry surface.



Ensure the child has washed their hands.

1.2 Remove the solid cap from the tube and **ADD 12-13 DROPS** of processing fluid.

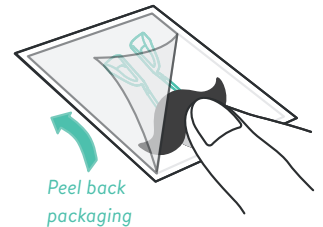


Replace the solid cap on the tube and set aside.

1.3 **OPEN THE FOIL PACKAGING** containing the Analyzer and set aside.



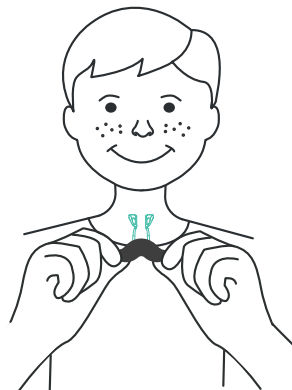
1.4 TOUCHING ONLY THE HANDLE, remove the swab out of its packaging.



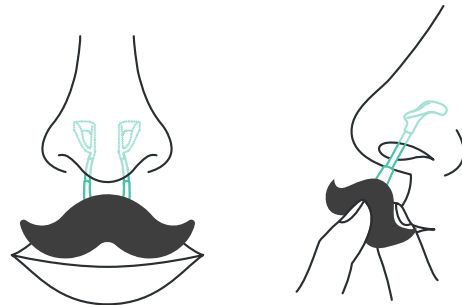
STEP 2: CHILD SELF-COLLECTS THE SAMPLE

2.1 ASK THE CHILD to hold the swab by the handle and bring it to their nose.

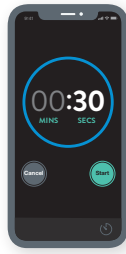
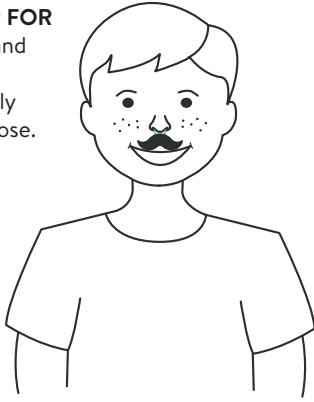
STEP 2 should be supervised by an adult.



2.2 THE CHILD SHOULD PLACE THE SWAB gently in their nose as far as is comfortable.



2.3 SET TIMER FOR 30 SECONDS and ask the child to breathe normally through their nose.



Set timer for 30 SECS

2.4 AFTER 15 SECONDS, ask the child to move the swab inside their nose for **15 seconds** making sure the loops make continual contact with the inside of their nose.

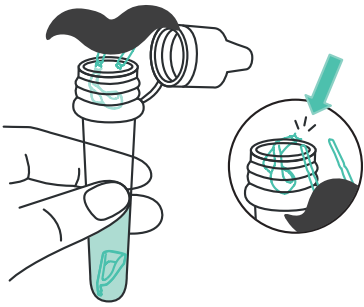
Move swab inside the nose
15 secs



STEP 3: ADULT ANALYZES THE SAMPLE

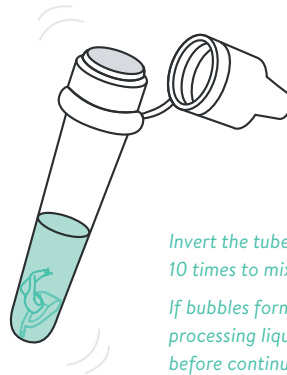
3.1 BREAK BOTH LOOPS INTO THE TEST TUBE ONE AT A TIME.

Holding the tube firmly in one hand and the swab in the other, insert **ONE LOOP AT A TIME** into the test tube and snap off at the break line.



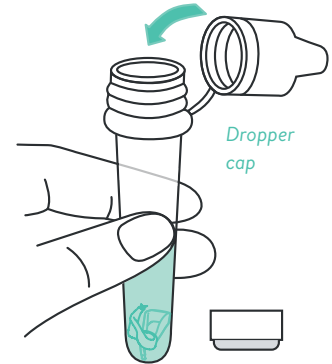
Do this by bending the swab arm against the edge of the tube at the break line.

3.2 SCREW THE SOLID CAP BACK TIGHTLY ON THE TUBE ensuring it is tightly sealed so the liquid does not leak.

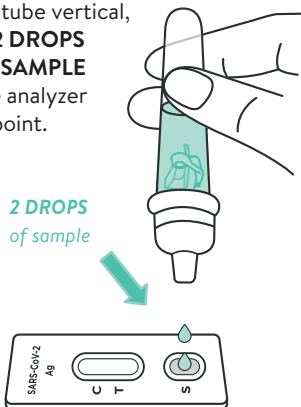


Invert the tube gently 10 times to mix.
If bubbles form, let the processing liquid settle before continuing.

3.3 REMOVE THE SOLID CAP and attach the **DROPPER CAP** to the tube.



3.4 Holding the dropper tube vertical, **PLACE 2 DROPS OF THE SAMPLE** onto the analyzer testing point.



3.5 LEAVE THE ANALYZER ON A CLEAN FLAT SURFACE and start the timer. The result will be ready in **15 MINUTES.**

Set timer for 15 MINUTES



Read result after 15 MINUTES.

Please note: Results are not valid if read after 20 minutes.

STEP 4: READ THE RESULT

4.1 Follow the guide below to read your result.



POSITIVE

If **two bands** develop, even if very faint, the result is positive.



NEGATIVE

If only the **C band** develops, the result is negative.



INVALID

If only the **T band** develops or there is no band visible then the result is invalid.

4.2 Please put all **USED ITEMS INTO THE BIOHAZARD BAG** and dispose of the bag carefully. **WASH OR SANITIZE YOUR HANDS TO FINISH.**

